



WILLIAM JOHNSTON
& COMPANY LIMITED



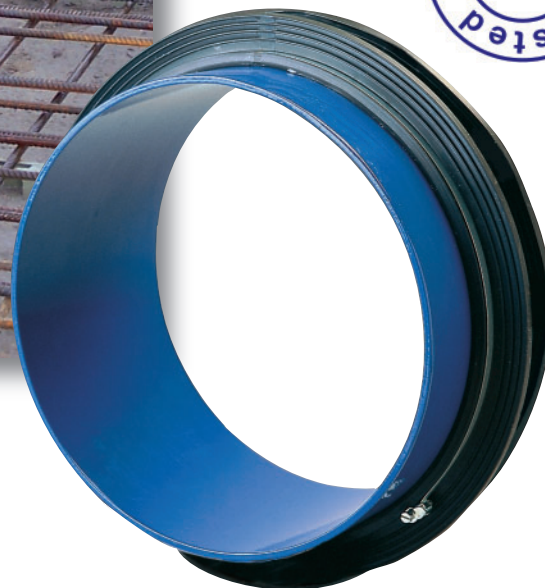
Glasgow Tel: +44 (0) 141 620 1666 | Inverness Tel: +44 (0) 1463 238 673
sales@williamjohnston.co.uk | www.williamjohnston.co.uk

YOUR OFFICIAL UK DISTRIBUTOR FOR LINK-SEAL

Pipeline Accessories



PSI Wallcollars

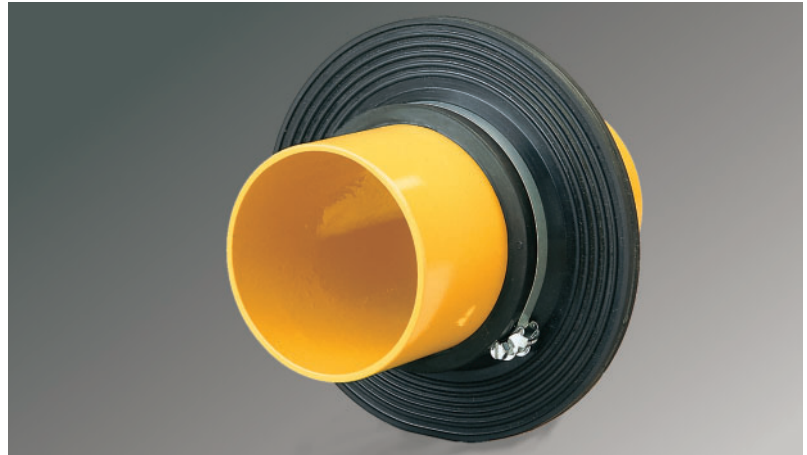


PSI Wallcollars

General Information



An economical and reliable method of hydrostatic sealing



PSI wallcollars are used for the hydrostatic sealing of pipes made of steel, cast iron, copper, plastic, asbestos free cement, concrete and vitrified clay that pass through walls, ceilings, floors, shaft openings, swimming pools and groundwater troughs.

PSI wallcollars are the ideal solution wherever it is not possible to retrofit sleeves or drill holes.

Tight to groundwater and pressurized water for pipe O.D. 32 mm up to O.D. 315 mm certified to 5 bar from pipe O.D. 355 mm certified to 4 bar

Material

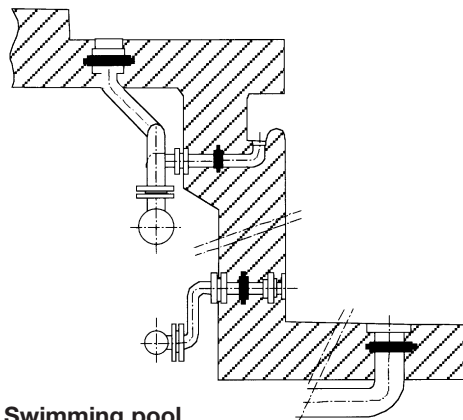
High quality rubber	Data/Unit
- Tensile strength	9.5 N/mm ²
- Elongation at break	500 %
- Hardness Shore A	45 +/- 5°
- Max. service temperature	80 °C
- Min. service temperature	- 40 °C



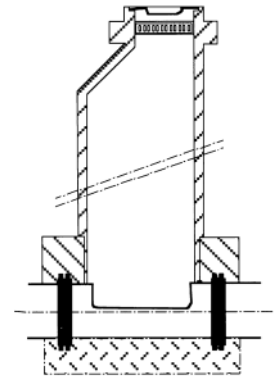
Note

PSI wallcollars are not anchor points.

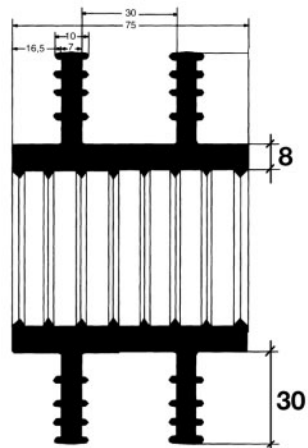
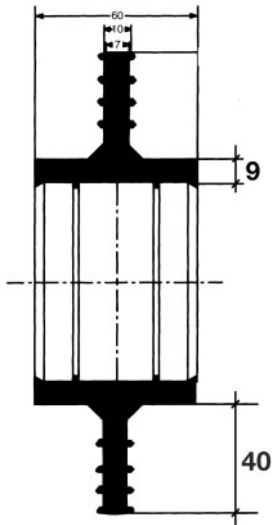
Application examples



Swimming pool



Man hole opening




O.D. pipe in mm	Suitable for pipe O.D.	
	min.	max.
32	29	32
40	38	42
50	48	53
63	60	64
75	71	80
90	84	92
110	105	116
125	120	130
140	135	148
160	154	166
180	175	190
200	195	210
225	215	230
250	245	260
280	275	290
315	310	327
355	350	365
400	395	410
450	440	460
500	495	515
560	555	580
630	625	650
710	705	735
800	795	830
900	895	930
1000	995	1030
1200	1195	1240
1400	1395	1450

Dimensions in mm. Tolerances possible.

Installation instructions:

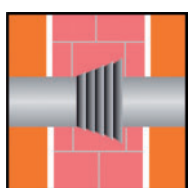
1. Clean the pipe surface to be encased in concrete with a piece of cloth etc.
2. Slide the wallcollar on until it reaches the centre of the concrete or the wall.
3. Attach the fastening straps:
 - Collars up to \varnothing 315: Fit one band on either side of the flange.
 - Collars from \varnothing 355: Fit one band on either side of the flanges and one between.
4. Put the fastening strap around the wallcollar and insert the end of the strap into the slot of the winding bolt.
5. Use screw driver or hexagon wrench to turn the winding bolt to the right. Slightly press the locking device until the component fits tightly.
6. To remove the fastening strap turn the winding bolt a little more in the direction of tightening in order to lift the locking device. The bolt can then be turned in the other direction to loosen the fastening strap.

O.D. 32 up to O.D. 315

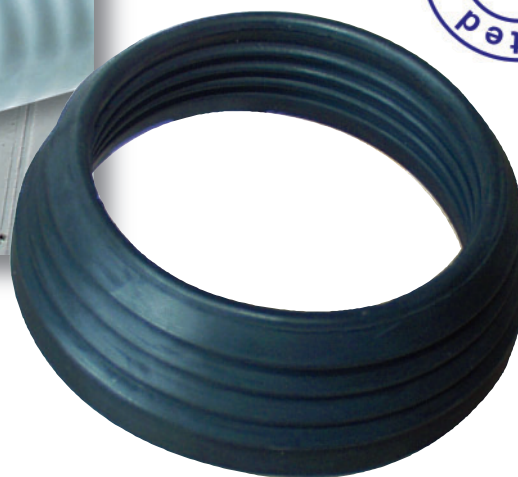
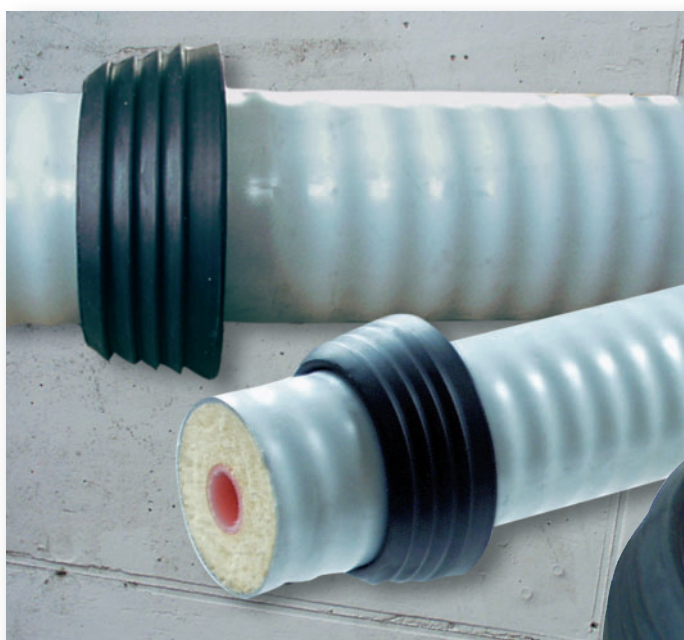
MFPA Leipzig GmbH Prüf-, Überwachungs- und Zertifizierungsstelle nach Landesbauordnung (SAC 02)		
Bereich: Konstruktiver Ingenieurbau Bereichsleiter: Univ.-Prof. Dr.-Ing. Stefan Winter Arbeitsgruppe: Bauwerksabdichtung		
<h2>Untersuchungsbericht</h2> <p>Nr. U 2.2 / 04 - 486</p> <p>vom 01.12.2004, 1. von 4 Ausfertigungen</p>		
Gegenstand:	Anwendungstechnische Prüfung des „PSI-Plitec Mauerkragens DN 100“	
Auftraggeber:	PSI Products GmbH Ulrichstraße 25 D-72116 Mössingen	
Bearbeiter:	Dipl.-Ing. Jüling	
Auftrag: 13.09.2004	Zeichen: F. Hellman	Eingang: 15.09.2004
Dieser Untersuchungsbericht besteht aus 4 Seiten und einer Anlage. Dieser Untersuchungsbericht darf nur ungekürzt verwendet werden. Eine Veröffentlichung – auch auszugsweise – bedarf der vorherigen schriftlichen Zustimmung der MFPA Leipzig GmbH.		
Gesellschaft für Materialforschung und Prüfungsanstalt für das Bauwesen Leipzig mbH Sitz: Hans-Wegel-Straße 2 b - 04319 Leipzig Postanschrift: PF 74 11 06 04320 Leipzig Telefon: 03 41 / 65 82-143 Fax: 03 41 / 65 82-199 e-Mail: abdichtung@mfpa-leipzig.de	Geschäftsführer: Univ.-Prof. Dr.-Ing. Stefan Winter; Dr.-Ing. Frank Dehn, Dipl.-Phys. Ingrid Kutzhoff Handelsregister: Amtsgericht Leipzig HRB 17719 Bankverbindung: Sparkasse Leipzig BLZ: 850 555 52 Kfz-Nr: 1100 560 781	

O.D. 355 and larger

MFPA Leipzig GmbH Anerkannte Prüfstelle für Baustoffe, Bauteile und Bauarten PUZ-Stelle nach Landesbauordnung (SAC 02), Bauproduktengesetz (NB 0800)		
 Durch die DAP GmbH nach DIN EN ISO/IEC 17025 akkreditierte Prüfbescheinigung. Die Akkreditierung gilt für die in der Uhrunde aufgeführten Prüfverfahren. DAP-PL-4077.00		
Geschäftsbereich V – Tiefbau Geschäftsbereichsleiter: Prof. Dr.-Ing. Olaf Selle Arbeitsgruppe – Bauwerksabdichtung		
<h2>Untersuchungsbericht</h2> <p>UB 5.1/08-314-1</p> <p>vom 27.04.2009 1. von 3 Ausfertigungen</p>		
Gegenstand:	PSI-Mauerkragen - Prüfung der Dichtigkeit im Einbauzustand	
Auftraggeber:	PSI Products GmbH Ulrichstraße 25 72116 Mössingen	
Probeneingang:	17.12.2008	
Probeneingangsnummer:	675	
Prüfzeitraum:	Januar bis April 2009	
Bearbeiter:	Dipl.-Ing. Jüling	
Dieser Untersuchungsbericht besteht aus 3 Seiten und einer Anlage. Dieser Untersuchungsbericht darf nur ungekürzt vervielfältigt werden. Eine Veröffentlichung – auch auszugsweise – bedarf der vorherigen schriftlichen Zustimmung der MFPA Leipzig GmbH. Als rechtsverbindliche Form gilt die Schriftform mit Originalunterschriften und Originalstempel des/der Zeichnungsberechtigten.		
Gesellschaft für Materialforschung und Prüfungsanstalt für das Bauwesen Leipzig mbH Geschäftsführer: Prof. Dr.-Ing. Frank Dehn Sitz: Hans-Wegel-Straße 2b - D - 04319 Leipzig Telefon: +49 (0) 341/65 82-143 Fax: +49 (0) 341/65 82- 199 E-Mail: abdichtung@mfpa-leipzig.de	Handelsregister: Amtsgericht Leipzig HRB 177 19 Ust.-Nr.: DE 813200649 Bankverbindung: Sparkasse Leipzig Kto.-Nr 1100 560 781 BLZ 850 555 52	



PSI Labyrinth – sealing rings for wall penetrations

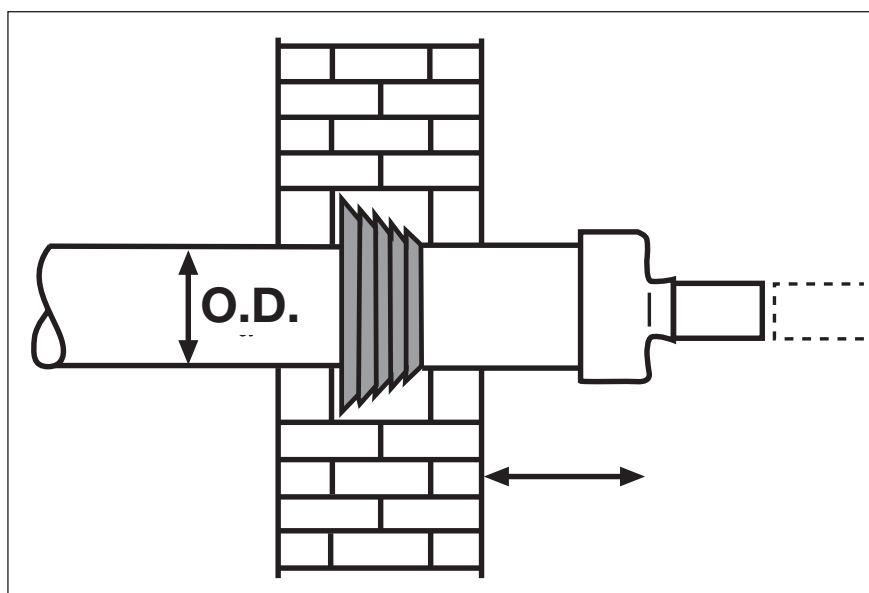
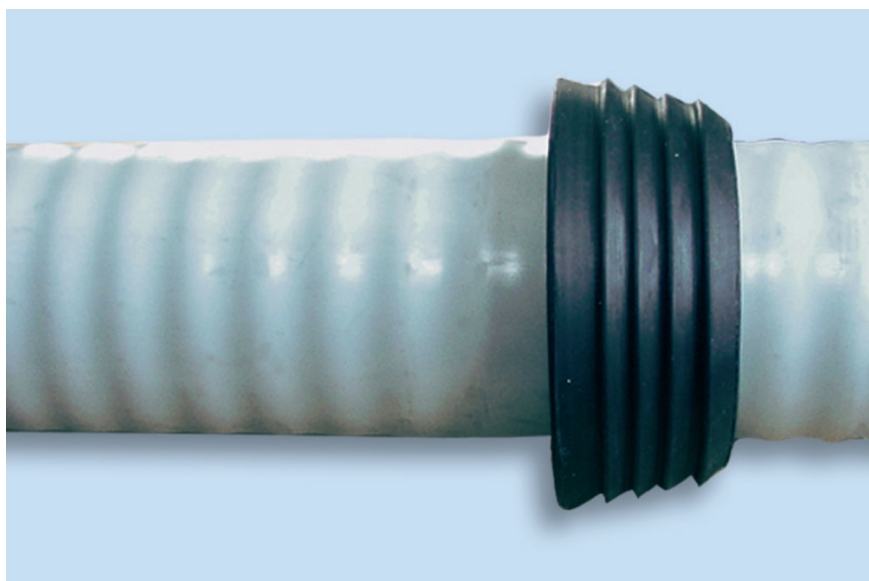


General Information

PSI Labyrinth sealing rings for wall-penetrations are a waterproof barrier against non-pressing water for the through-holes in walls for pipelines. The principal applications are pre-insulated pipe, particularly PE-jacket and flexible pipes for district heating systems. The sealing rings consist of high-quality rubber and are molded from one piece up to size O.D. 200 mm. Thanks to their conical shape, the rings fit tightly on to the pipe, eliminating any need for additional clamping straps.

PSI Labyrinth sealing rings are pushed on to the pipe and cast in the centre of the wall.

PSI Labyrinth sealing rings are tested by the MFPA Leipzig up to a water pressure of 0.5 bar and certified accordingly. If a water pressure of more than 0.1 bar is expected, we recommend using the Kompakt-FW seals against pressing water for district heating pipe wall penetration.

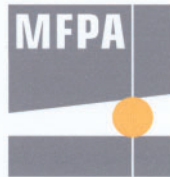


O.D.-Pipe Size	Art. no.
65	4-023-17116
75	4-023-17090
90	4-023-17091
110	4-023-17092
125	4-023-17093
140	4-023-17094
160	4-023-17095
180	4-023-17096
200	4-023-17097
225	4-023-17100
250	4-023-17101
280	4-023-17102
315	4-023-17103
355	4-023-17104
400	4-023-17105
450	4-023-17106
500	4-023-17107
560	4-023-17108
630	4-023-17109
670	4-023-17110
710	4-023-17111
800	4-023-17112
900	4-023-17113
1000	4-023-17114



A copy of the complete test report is obtainable on request from:
vertrieb@psi-products.de

MFPA Leipzig GmbH
Prüf-, Überwachungs- und
Zertifizierungsstelle nach
Landesbauordnung (SAC 02)



Bereich: Konstruktiver Ingenieurbau
Bereichsleiter: Univ.-Prof. Dr.-Ing. Stefan Winter
Arbeitsgruppe: Bauwerksabdichtung

Untersuchungsbericht

Nr. U 2.2 / 05 - 153

vom 30.09.2005, 1. von 3 Ausfertigungen

Gegenstand: *PSI-Mauerdichtring 110 mm -
Prüfung der Dichtigkeit im Einbauzustand*

Auftraggeber: PSI Products GmbH
Ulrichstraße 25
D-72116 Mössingen

Bearbeiter: Dipl.-Ing. Jüling



Auftrag:
14.07.2005

Zeichen
J Blatz

Eingang
14.07.2005

Dieser Untersuchungsbericht besteht aus 3 Seiten und einer Anlage.

Dieser Untersuchungsbericht darf nur ungekürzt verwendet werden. Eine Veröffentlichung – auch auszugsweise – bedarf der vorherigen schriftlichen Zustimmung der MFPA Leipzig GmbH.

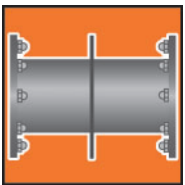
Gesellschaft für Materialforschung und Prüfungsanstalt
für das Bauwesen Leipzig mbH
Sitz: Hans-Weigel-Straße 2 b · 04319 Leipzig

Postanschrift: PF 74 11 06
04323 Leipzig
Telefon: 03 41 / 65 82-143
Fax: 03 41 / 65 82-199
e-Mail: abdichtung@mfpa-leipzig.de

Geschäftsführer:
Univ.-Prof. Dr.-Ing. Stefan Winter, Dr.-Ing. Frank Dehn,
Dipl.-Phys. Ingolf Kotthoff

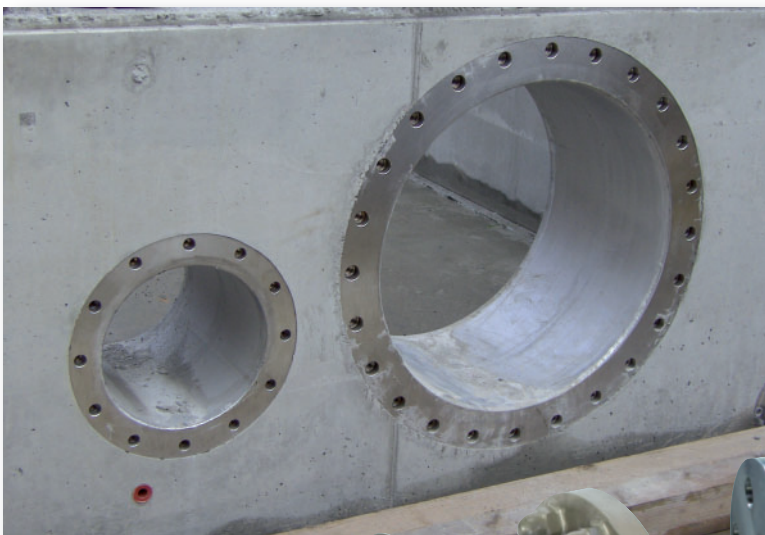
Handelsregister: Amtsgericht Leipzig HRB 17719

Bankverbindung:
Sparkasse Leipzig
BLZ: 860 555 92 Kt.-Nr.: 1100 560 781



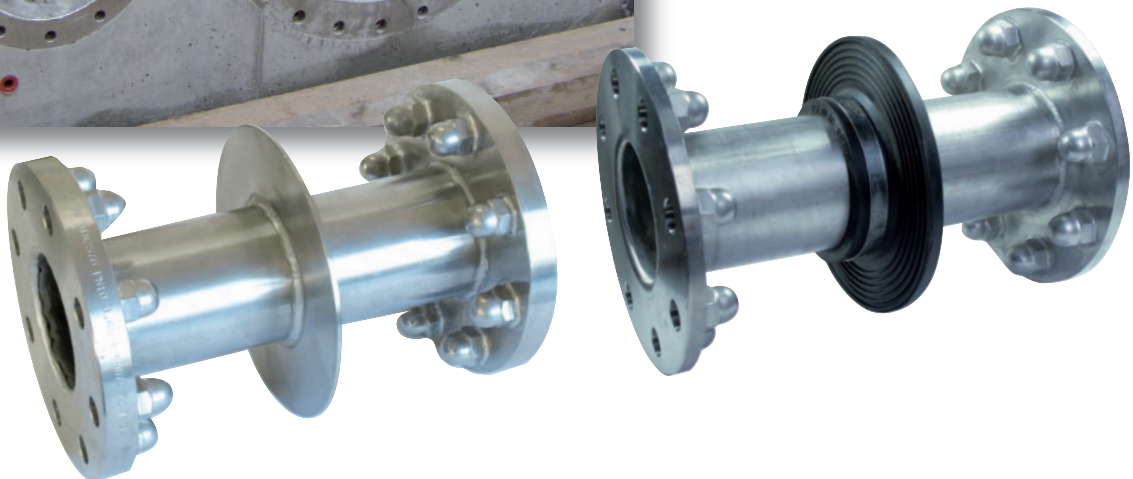
PSI Integra-Pipe / Integra-Pipe 4.0

Stainless Steel Wall Penetrations



**MFPA tested
4 bar**

**Integra-Pipe 4.0
with rubber
wall collar**



Disclaimer

Please note, failure to select the correct materials or products we supply (“the Products”) may result in damage to plant, equipment or property. In some instances, it may cause death or personal injury. We are not designers and do not give advice about design related matters concerning the Products. We can help and assist with the technical specifications for the Products. In specific applications, particularly where critical conditions exist, we will try to assist you within the limitations of the services that we offer. All information supplied by us is intended as technical co-operation outlining the specifications of the different Products which we supply. To the extent permitted in law, no warranty is given in respect of any information supplied by us. The customer must satisfy themselves as to the suitability of the Products for their intended application and use. The correct fitting of Products is the responsibility of the customer. Your statutory rights remain unaffected. Save in respect of death, personal injury or fraud, our entire liability to you, however arising from the supply of Products shall be limited to the £10M indemnity amount provided by our insurers.

PSI Integra Pipe/Integra Pipe 4.0 Stainless Steel Wall Penetration

Technical Data

The PSI Integra Pipe stainless steel wall penetration is cast **in the concrete wall**. It seals a variety of media. The medium-carrying pipes are flanged directly to the cast-in bushing. The Integra Pipe assembly is carried out flush with the casing for a variety of applications such as **clarifiers, high-level tanks, shaft constructions and much more**.

The flanges can be manufactured as welding neck flanges according to DIN 2632 (PN10) or smooth flanges (turned on all sides with reduced sheet thickness) similar to DIN 2576 (PN10). **Other pressure stages available on request.** All connecting flanges have cap nuts welded tightly on the back.

The stainless steel pipes correspond to ISO pipe series 1. Integra Pipe is **supplied with a centrally welded wall flange**, an annular water stop plate that guarantees a safe sealing of the sleeve outer diameter and also serves as a **wall anchor**.

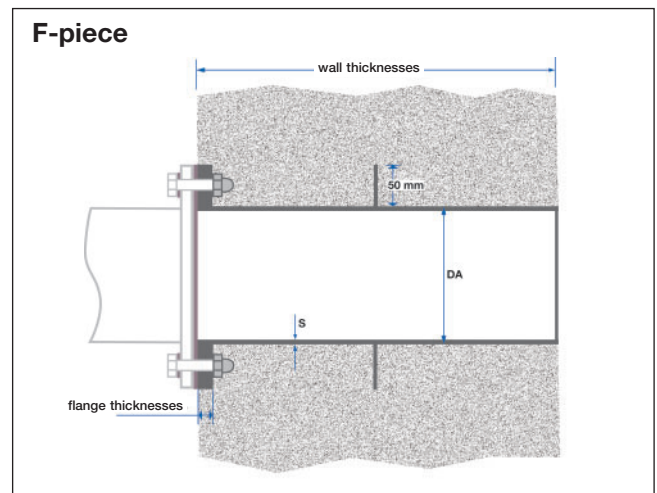
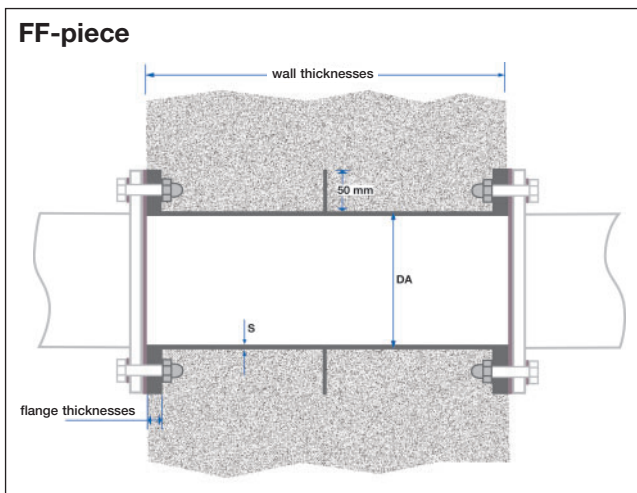
Integra Pipe is **manufactured in V2A** (1.4301 or 1.4541) or V4A (1.4571), other materials on request. It is welded in inert gas and **stained and passivated afterwards**. **On request** Integra Pipe can be supplied **sanded, without wall flange** or **with one flange sheet only** (F-piece).

Selection Table

dimension ND	pipe dimension mm O.D. x S	wall thickness* mm	flange thickness [mm] welding neck flange DIN 2632 PN10	flange thickness [mm] smooth flanges similar to DIN 2576 PN10
50	60.3 x 2.0	300	18	10
65	76.1 x 2.0	300	18	10
80	88.9 x 2.0	300	20	10
100	114.3 x 2.0	300	20	10
125	139.7 x 2.6	300	22	10
150	168.3 x 2.6	300	22	12
200	219.1 x 3.0	300	24	12
250	273.0 x 3.0	300	26	15
300	323.9 x 3.0	300	26	15
350	355.6 x 4.0	300	26	15
400	406.4 x 4.0	300	26	15
500	508.0 x 4.0	300	28	15

Integra Pipe 4.0 with rubber wall collar, pressure tight up to 5 bar for pipe dimensions 32 to 315 mm O.D. Pressure tight up to 4 bar for pipe dimensions exceeding 355 mm O.D.

*Also available for other wall thicknesses



High-quality Integra pipes are characterised by long term performance and high resistance owing to selected materials and are particularly appropriate for demanding applications.

PSI-Products is the competent partner for special applications (e.g. waterworks, sewage plants, industrial buildings, etc.)